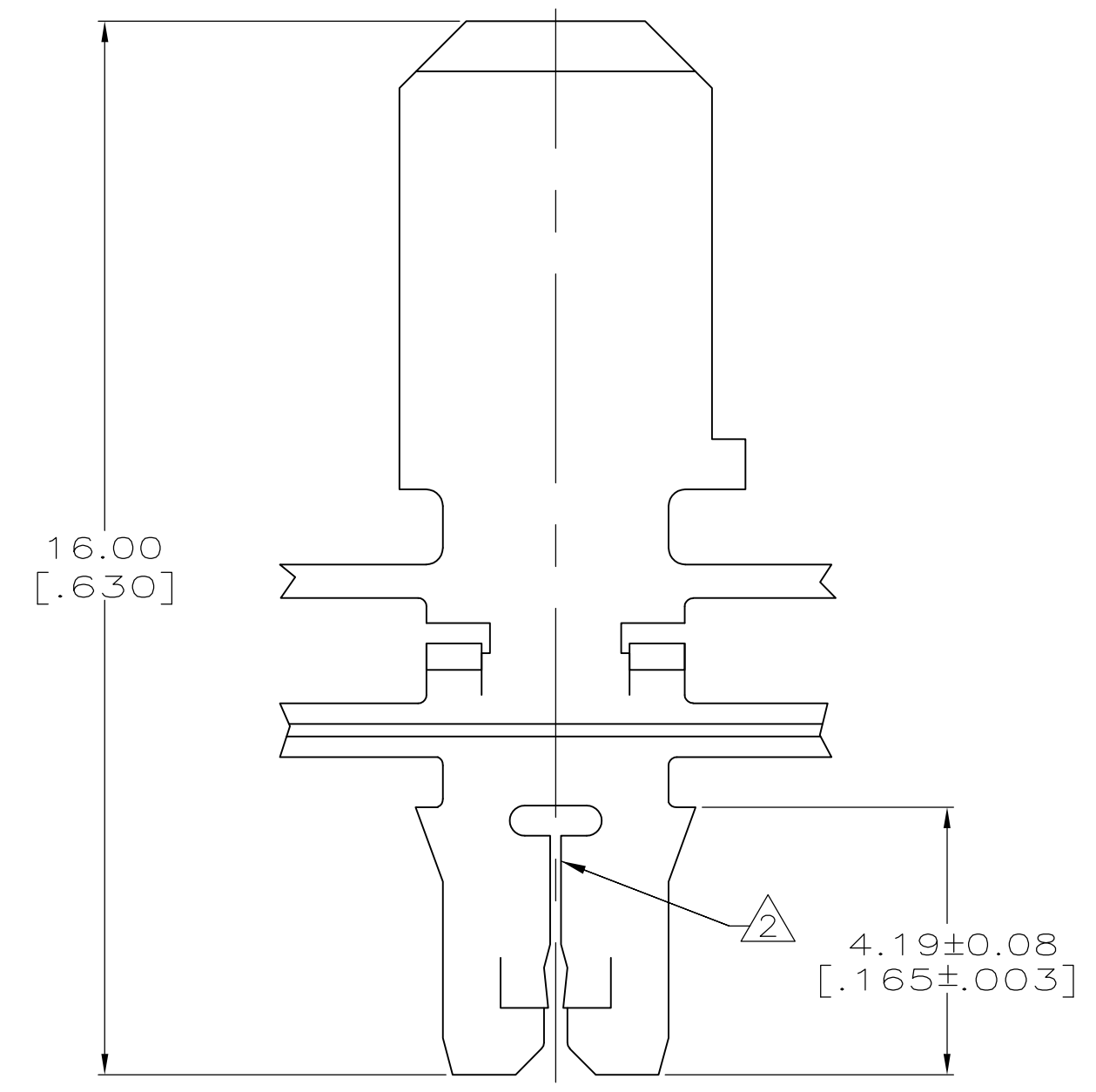
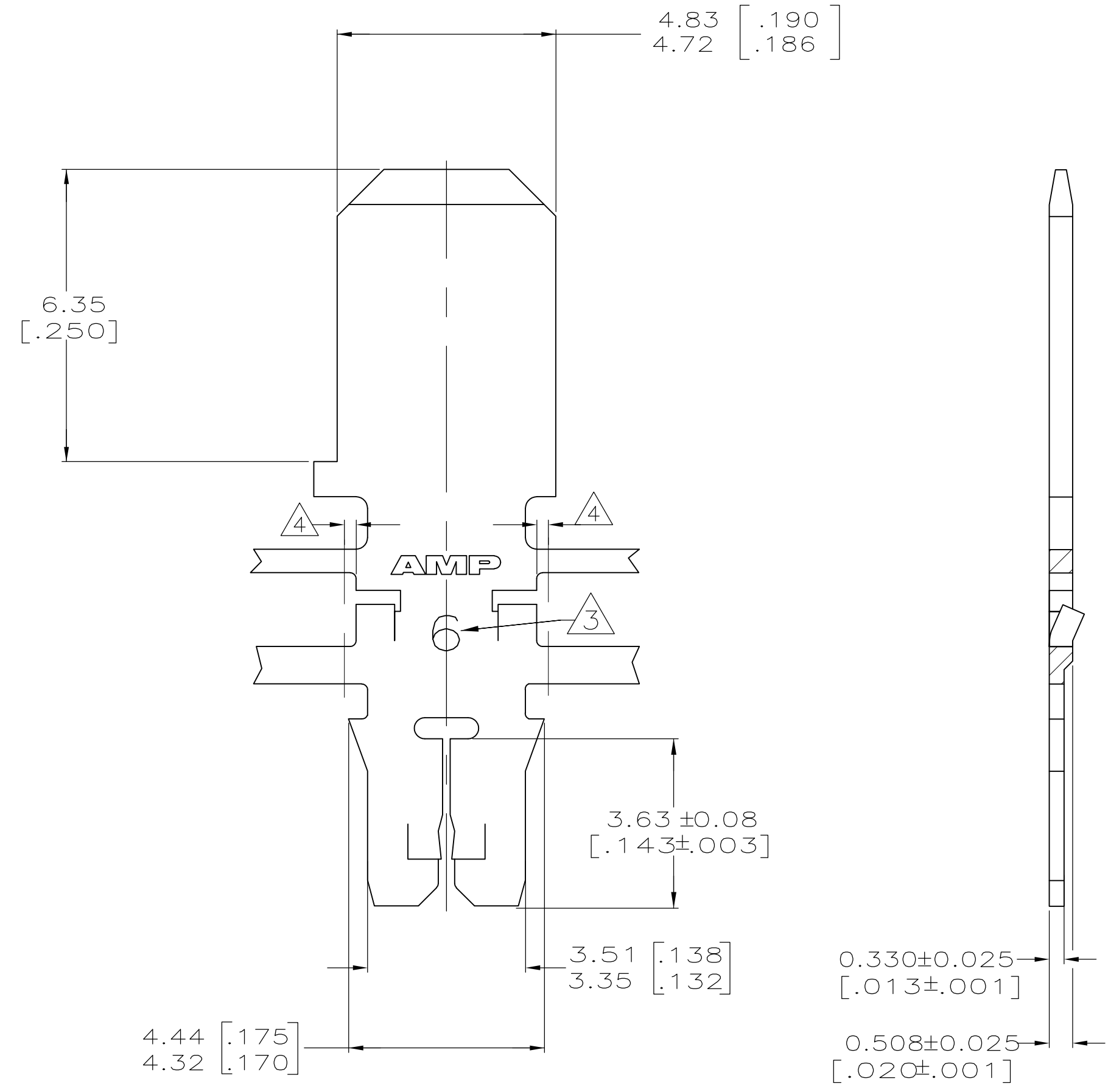


THIS DRAWING IS UNPUBLISHED. RELEASED FOR PUBLICATION
 © COPYRIGHT BY TYCO ELECTRONICS CORPORATION. ALL INTERNATIONAL RIGHTS RESERVED.

LOC		DIST		REVISIONS			
P	LTR	DESCRIPTION		DATE	DWN	APVD	
A		REVISED PER ECO-10-006334		24MAR10	HMR	KR	

- 1 CONTINUOUS STRIP ON REELS WITH TERMINALS LOCATED ON 6.86±0.08 [.270±.003] CENTERS.
- 2 SLOT ACCEPTS 0.25-0.32mm [#30-#28] AWG COPPER MAGNET WIRE. TWO WIRES OF THE SAME SIZE MAX PER SLOT.
- 3 IDENTIFICATION NUMBER 6 FOR THE MAGNET WIRE SLOT SIZE.
- 4 0.25[.010] MAX CARRIER CUT-OFF TABS.



THIS DRAWING IS A CONTROLLED DOCUMENT.		DWN	S SCHLEGEL	1/26/10	082 PRE-MILLED BRASS			1742832-1			
DIMENSIONS: mm [INCHES]		CHK	K RANDOLPH	1/26/10	DESCRIPTION			PART NUMBER			
TOLERANCES UNLESS OTHERWISE SPECIFIED: 0 PLC ± - 1 PLC ± - 2 PLC ± 0.13 [.005] 3 PLC ± - 4 PLC ± - ANGLES ± -		APVD	K RANDOLPH	1/26/10	Tyco Electronics Corporation Harrisburg, PA 17105-3608						
MATERIAL SEE TABLE		FINISH	0.002032 [.000080]	NAME			TAB, 4.75 [.187] FASTON, MAG-MATE Slim Line				
		WEIGHT	-	SIZE	A2	CAGE CODE	00779	DRAWING NO	C=1742832	RESTRICTED TO	-
		CUSTOMER DRAWING			SCALE	10:1	SHEET	1 of 1	REV	A	

1742832