

"High Frequency Ceramic Solutions"

Preliminary

2.45 / 5.5GHz WLAN Ceramic Diplexer (BPF/BPF type)

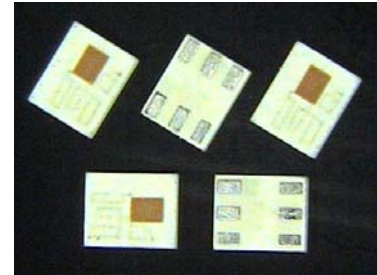
P/N 2450DP39G5500

Detail Specification: 8/2/2012

Page 1 of 3

General Specifications

Part Number		2450DP39G5500		
Operating Temperature Range		-40 ~ +85 °C		
Frequency	Insertion Loss	Passband VSWR	Return Loss (min)	Attenuation (db)
2400~2500	2.5 max.	2.0 max.	-9.54	30 min. @ 824~915MHz
				30 min. @ 1545~1605MHz
				30 min. @ 1710~1910MHz
				22 min. @ 2170MHz
				35 min. @ 4800~5000MHz
5150~5850	1.0 max.	2.0 max.	-9.54	25 min. @ 2400~2500MHz
				20 min. @ 10300~11700MHz



Recommended Storage Conditions*	+5 to +35 °C, Humidity 45~75%RH
Reel Quantity	3,000
Storage Period	18 months max.
Power Capacity	500mW max.

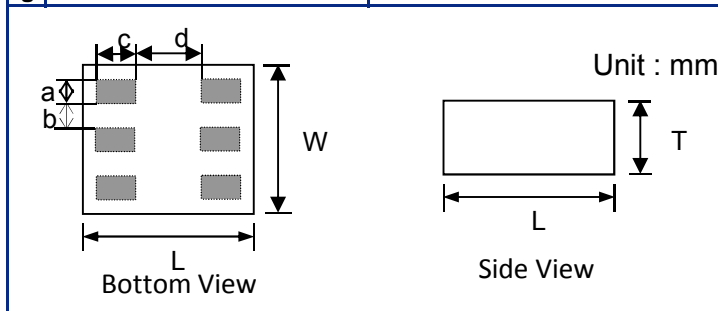
*18 months in vacuum sealed bag and 1 week cumulative after opened.

Part Number Explanation

P/N Suffix	Packing Style	Bulk	Suffix = S	eg. 2450DP39G5500S
		T & R (3000pcs)	Suffix = E	eg. 2450DP39G5500E
	Termination style	100% Tin	Suffix = None	eg. 2450DP39G5500(E or S)
	Evaluation Board	2450DP39G5500-EBSMA		

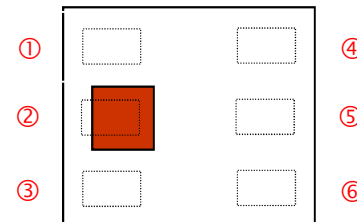
Mechanical Dimensions

	In	mm
L	0.098 ± 0.008	2.50 ± 0.20
W	0.079 ± 0.008	2.00 ± 0.20
T	0.028 max.	0.70 max.
a	0.012 ± 0.004	0.30 ± 0.10
b	0.016 ± 0.004	0.40 ± 0.10
c	0.024 ± 0.004 /-0.2	0.60 ± 0.10
g	0.043 ± 0.006	1.10 ± 0.15



Terminal Configuration

No.	Function
1	GND
2	GND
3	Lower Freq. Port
4	Higher Freq. Port
5	GND
6	Common Port



"High Frequency Ceramic Solutions"

Preliminary

2.45 / 5.5GHz WLAN Ceramic Diplexer (BPF/BPF type)

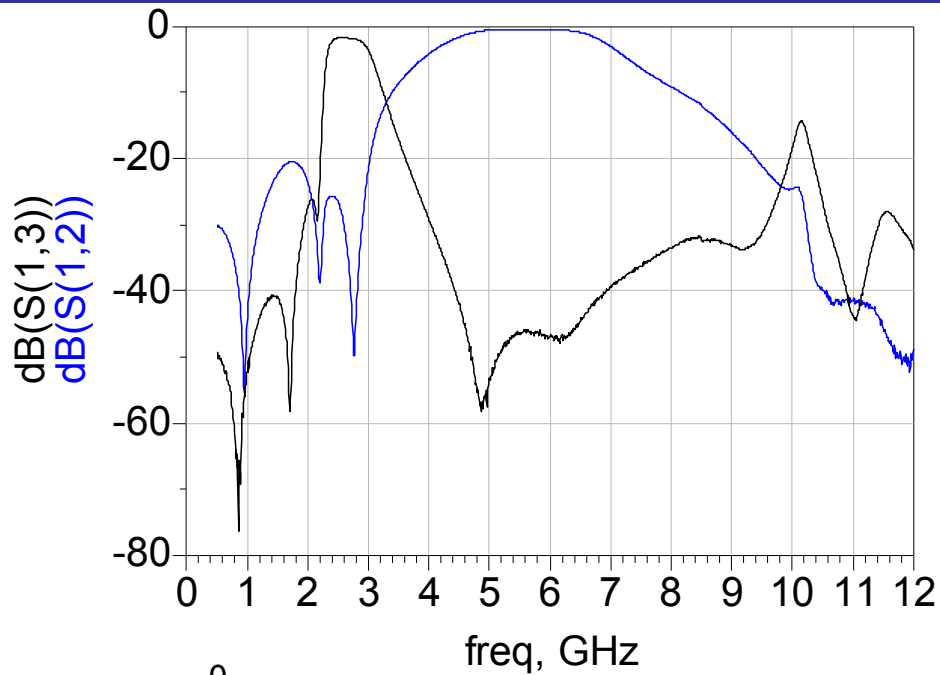
P/N 2450DP39G5500

Detail Specification: 8/2/2012

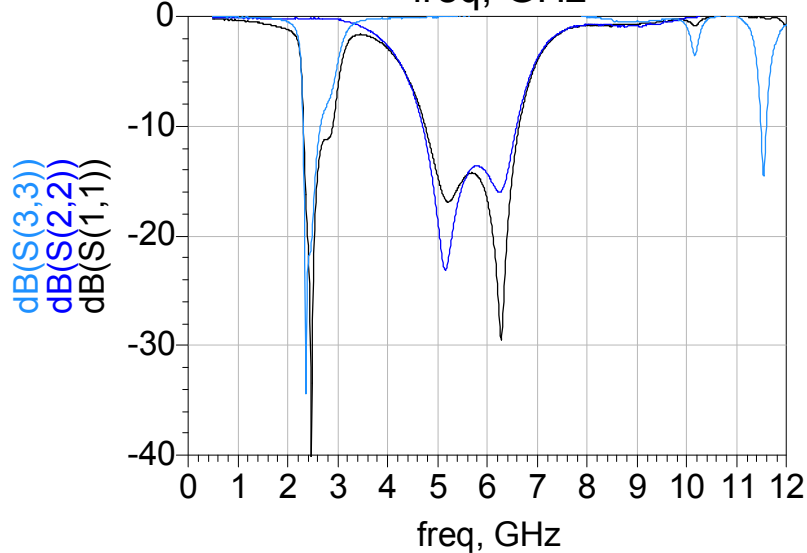
Page 2 of 3

Typical Electrical Performance (T=25°C)

Attenuation



Return Loss



The contents of this data sheet are subject to change without notice. Please confirm the specifications and delivery conditions when placing your order. All sales are subject to Johanson Technology, Inc. terms and conditions.



www.johansontechnology.com

4001 Calle Tecate • Camarillo, CA 93012 • TEL 805.389.1166 FAX 805.389.1821

2012 Johanson Technology, Inc. All Rights Reserved

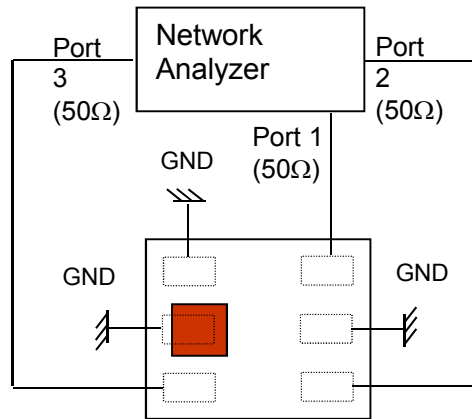
2.45 / 5.5GHz WLAN Ceramic Diplexer (BPF/BPF type)

P/N 2450DP39G5500

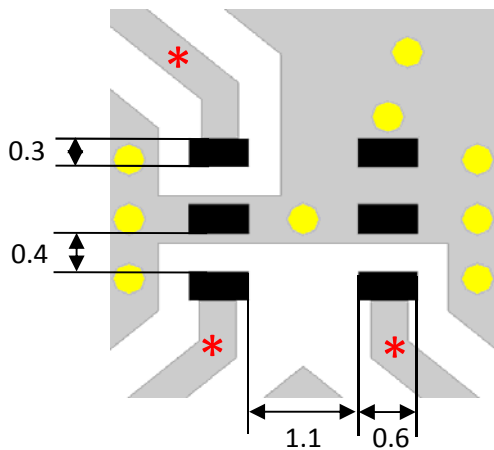
Detail Specification: 8/2/2012

Page 3 of 3

Measuring Diagram



Mounting Considerations



- Solder Resist
- Land
- Through-hole (0.30)

* Line width should be designed to match 50Ω characteristic impedance, depending on PCB material and thickness.

The contents of this data sheet are subject to change without notice. Please confirm the specifications and delivery conditions when placing your order. All sales are subject to Johanson Technology, Inc. terms and conditions.