



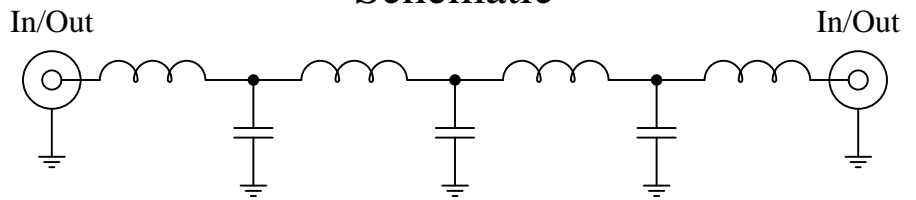
Part Number: CLPFL-2400

Low Pass Range  
 DC to 2400MHz

**New**  
**Low Pass Filters**



Schematic



Features:

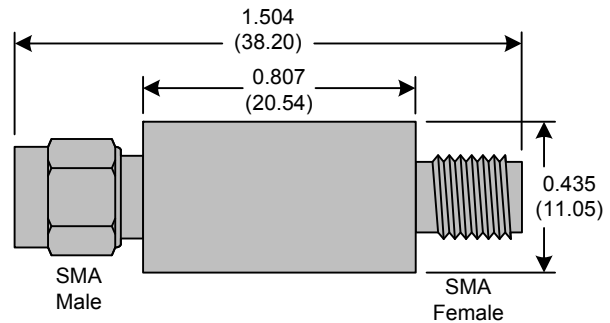
- 7<sup>th</sup> Order Butterworth Response
- 50Ω SMA Connectors

Applications:

- Test Equipment
- Lab Use

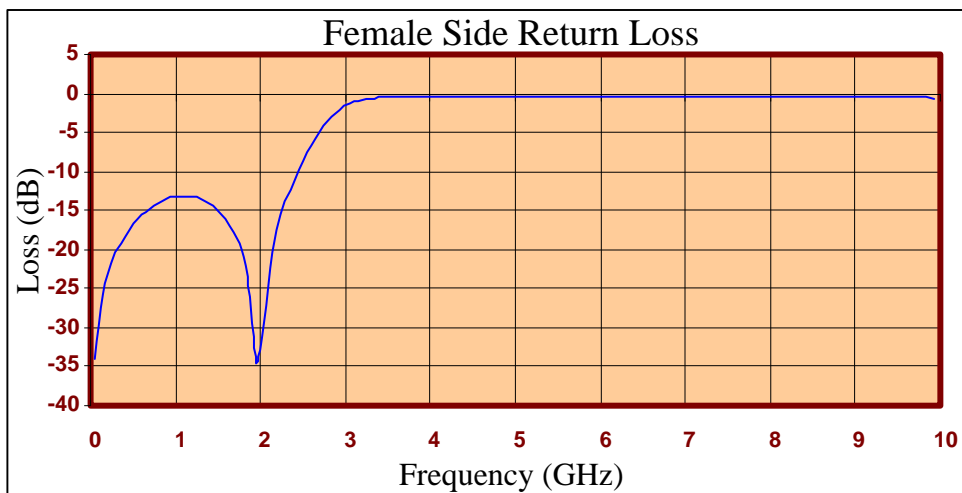
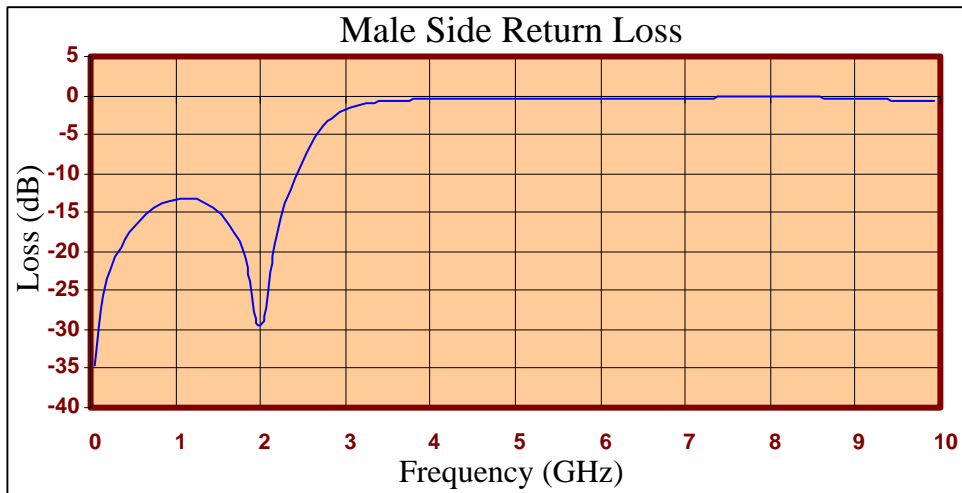
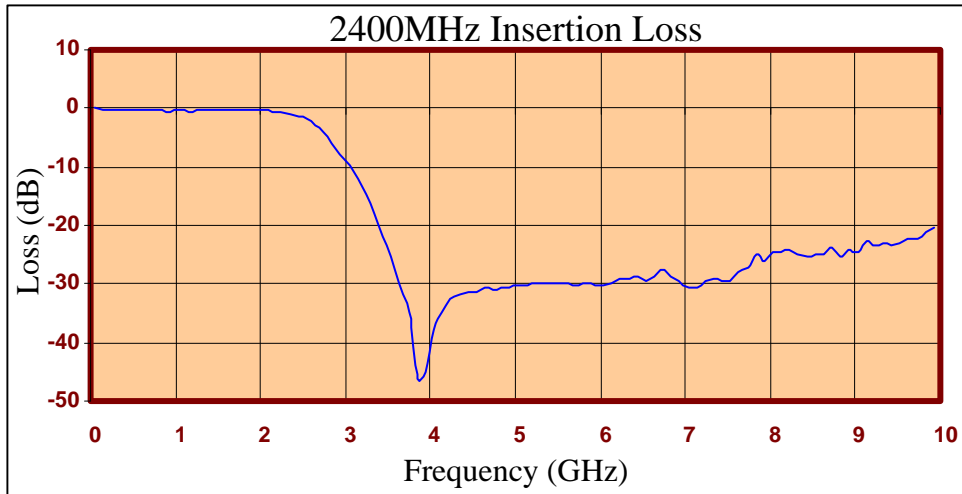
Maximum Ratings:

- +36dBm (4 Watts)
- Operating Temperature: -40°C to 85°C
- Storage Temperature: -55°C to 100°C



Crystek's new line of Low Pass Filters are designed in a rugged SMA housing. This filter line has excellent out-of-band rejection. Designed for Test Equipment and General Lab Use.







FREQ (MHz)	INSERTION LOSS (dB)	Male Return Loss (dB)	Female Return Loss (dB)
50.000	-0.04	-34.46	-34.11
249.500	-0.11	-21.95	-21.87
449.000	-0.20	-17.62	-17.47
648.500	-0.28	-15.26	-15.10
848.000	-0.34	-13.88	-13.75
947.750	-0.45	-13.48	-13.36
1047.500	-0.42	-13.28	-13.17
1247.000	-0.39	-13.37	-13.35
1446.500	-0.39	-14.31	-14.41
1546.250	-0.38	-15.24	-15.44
1646.000	-0.41	-16.64	-16.98
1845.500	-0.40	-22.10	-23.49
2045.000	-0.40	-29.01	-29.04
2244.500	-0.78	-15.67	-15.56
2444.000	-1.41	-9.46	-9.69
2643.500	-2.89	-5.39	-5.71
3042.500	-9.67	-1.52	-1.40
3345.750	-18.07	-0.86	-0.57
3641.000	-29.86	-0.66	-0.48
4040.000	-37.76	-0.40	-0.49
4339.250	-31.96	-0.34	-0.43
4638.500	-30.66	-0.36	-0.37
5037.500	-30.34	-0.41	-0.41
5336.750	-29.85	-0.42	-0.45
5636.000	-30.01	-0.42	-0.47
6035.000	-30.08	-0.40	-0.45
6334.250	-29.13	-0.38	-0.40
6633.500	-28.67	-0.35	-0.34
7032.500	-30.80	-0.30	-0.30
7331.750	-29.25	-0.27	-0.28
7631.000	-28.07	-0.24	-0.31
8030.000	-24.55	-0.22	-0.35
8329.250	-24.94	-0.20	-0.39
8628.500	-24.99	-0.30	-0.41
9027.500	-24.73	-0.42	-0.42
9326.750	-23.08	-0.55	-0.44
9626.000	-22.45	-0.59	-0.47
9925.250	-20.37	-0.71	-0.56

**Product Control:**

Crystek Part Number:	CLPFL-2400	Release Date:	10-Jan-11
Revision Level:	A	Responsible:	K. Piotrowicz

